



# CLAY ENOCH, NSS, NSG

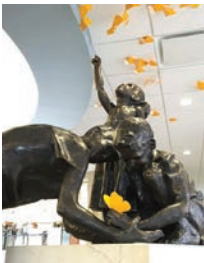
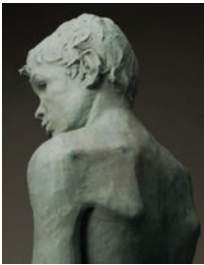
## EDUCATION/PERSONAL:

- 2004-Present Full-Time Sculptor, Colorado Springs, CO
- 2013-2018 Elder, Red Rock Church - North Point Ministries, Colorado Springs, CO
- 1998-2001 Sculpture Workshops, Loveland Academy of Fine Art, Loveland, CO  
Notable Instructors: Eugene Daub, Kirsten Kokkin, Richard McDermott Miller
- 1998 Apprenticeship with Barry Petri Foundry, Victor, CO
- 1995 Bachelor of Fine Art, Wheaton College, IL
- 1994-95 Wheaton in the Rockies, Bronze Casting Practicum, Gypsum, CO
- 1993-95 Apprenticeship with Sculpture Professor, Jeff Thompson



## PUBLIC COMMISSIONS:

- 2022 Macro/Micro Discoveries, Surprise Lake Middle School, Milton, WA
- 2022 Summer Swim, Naples, FL
- 2021 Hudson and Miriam, Armerding Center for Music and the Arts, Wheaton, IL
- 2019-20 Tree of Life, Civic Center Plaza, Downey, CA
- 2018 Clear Channels, Crimson Resource Management, Denver, CO
- 2017-18 Salute, Veteran's Commemoration, OrthoIndy YMCA, Indianapolis, IN
- 2016-17 United, 60th Commemorative Sculpture, Central High School, Little Rock, AR
- 2016 Union, Clearwater Crossing Union Fountain, Paramount, CO
- 2015-16 Compassion Angel, Cindy Miller Memorial, Little Rock, AR
- 2014-16 On the Edge, YMCA Recreation & Aquatic Center, Edmond, OK
- 2015 Marco Polo, Williamson Medical Center Nashville, TN
- 2015 Do you See what I See?, Williamson Medical Center Nashville, TN
- 2014-15 Guardians, International Association of Fire Fighters, Colorado Springs, CO
- 2012-13 Water's Edge, Arkansas Children's Hospital, Little Rock, AR
- 2012-13 Turtle Hunters, Arkansas Children's Hospital, Little Rock, AR
- 2012 Community & Samaritan, Inner City Health Center, Denver, CO
- 2011 Faith and Resolve, Mount Vernon Nazarene University, Mount Vernon, OH
- 2011 Steady, Clark Memorial, Presidential Park Wetlands, Little Rock, AR
- 2010 Spike Baker, portrait, Fort Collins Country Club, Fort Collins, CO
- 2009 Climb On! six figures, 6'x6', Gold Camp Elementary, Colorado Springs, CO
- 2008 President J. Richard Chase, 30"x37" bas-relief portrait, Wheaton College, IL
- 2007 Finish Strong, 8'x16' wall relief, Evangelical Christian School, Memphis, TN
- 2004 Crucifix, 7' corpus, St. Patrick's Parish, Colorado Springs, CO
- 2004 Let's Roll!, 7' relief, Todd M. Beamer Student Center, Wheaton College, IL
- 2004 Founders, 2 life-size portraits, Lipscomb Pitts Insurance Co. Memphis, TN
- 2001 Celebration, 6'x6' relief panels, First Congregational Church, Greeley, CO
- 2000 Looking unto Heaven, life-size Christ figure, The Country Place, Moscow, TN



## PROFESSIONAL ORGANIZATIONS:

- 2011 National Sculpture Society – Elected Fellow Member New York, NY
- 2010 National Sculptors' Guild – Elected Fellow Member Loveland, CO

## SELECT ACCOLADES:

- 2011 Peer Award, Sculpture at the River Market Little Rock, AR
- 2010 Polich Tallix Foundry Prize, Brookgreen Gardens Murrels Inlet, SC



## CLAY ENOCH | THE NATIONAL SCULPTORS' GUILD

PO Box 848 | Loveland, Colorado 80539 | (970) 667-2015  
Clay@NationalSculptorsGuild.com | JK-Designs-Inc.com



**PUBLICATIONS:**

- 2011 Southwest Art Magazine, Sculpture Issue Feature
- 2005 & 09 Wheaton College Alumni Magazine
- 2008 Nashville Arts
- 2004 & 08 Colorado Springs Gazette
- 2004 Commercial Appeal Memphis Magazine, Midsouth, Traditional Home



**SELECT EXHIBITIONS:**

- 2023 Solo Show: Waters, Surface Gallery, Colorado Springs, CO
- 2010-22 National Sculptors' Guild Annual Exhibit and Sale Loveland, CO
- 2009-18 Sculpture at the River Market, Annual Juried Exhibition Little Rock, AR
- 2010 77th Exhibit, National Sculpture Society, Brookgreen Gardens Murrels Inlet, SC
- 2010 Leiper's Creek Gallery, Metal, Sticks and Stones Franklin, TN
- 2009 Amy Howard Showroom Atlanta, GA
- 2008-09 White Stone Gallery Philadelphia, PA
- 2008-09 Palladio Art & Antiques Memphis, TN
- 2006-09 Leiper's Creek Gallery Franklin, TN
- 1998-2007 One Man Show Memphis, TN
- 2006-07 JHS Gallery Taos, NM
- 2003-06 Sculpture in the Park Loveland, CO
- 2006 Sacred Art Show Scottsdale, AZ
- 2005 Canaan Gallery Denver, CO
- 2004 Frances Aranson Fine Art Atlanta, GA
- 2003-04 Rankin Interiors Jackson, MS
- 2000 Cantigny Sculpture and Fine Art Wheaton, IL



**CLAY ENOCH | THE NATIONAL SCULPTORS' GUILD**

PO Box 848 | Loveland, Colorado 80539 | (970) 667-2015  
 Clay@NationalSculptorsGuild.com | JK-Designs-Inc.com